

Programme

2nd ITCC Scientific Days

March 27th - 28th 2025

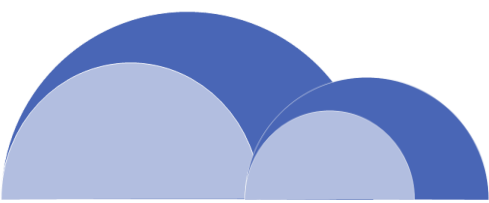
**Baltic Centre for Contemporary Art
Gateshead**

WiFi name: Events WiFi

Password: Rije5HiPwv



C—FURTHER

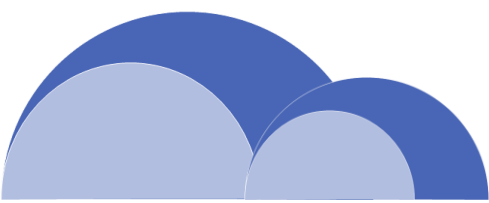


DAY 1 THURSDAY 27TH MARCH

- 08.00 – 12.30** | General registration.
- 08.00 – 11.00** | MB Working Group (closed meeting, Meeting Room, break 9.30 – 10.00).
- 08.30 – 12.00** | Clinical Trial Workshop (closed meeting, Auditorium, break 10.30 – 11.00).
- 09.00 – 12.00** | Grasshopper Kick-off Event (closed meeting, Cinema Room, break 10.00 – 10.30).
- 12.15 – 13.15** | HGG Working Group (closed meeting, Cube Room).
- 12.00 – 12.45** | Lunch.

ADVANCES IN CELLULAR THERAPIES

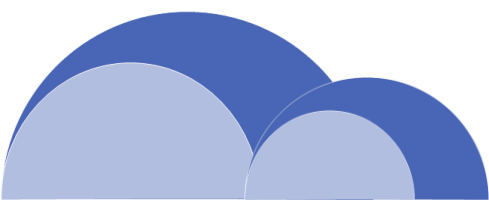
- 12.45 – 13.00** | Welcome and introduction
Dr Rebecca Hill & Prof Jan Molenaar (Organising Committee).
- 13.00 – 13.45** | Leveraging biological insights to engineer immunotherapies for paediatric cancer
Keynote: Dr Robbie Majzner (Dana Farber Cancer Institute, Harvard).
- 13.45 – 14.00** | Combining CD47 blockade with chemoimmunotherapy in preclinical chemo-resistant neuroblastoma models, *Courtney Himsworth (UCL Great Ormond Street Institute of Child Health, London).*
- 14.00 – 14.15** | Characterizing the spatial transcriptomic landscape of osteosarcoma from diagnosis to relapse, *Antonin Marchais (Gustave Roussy, Villejuif).*
- 14.15 – 14.30** | Imaging mass cytometry reveals the spatial network of immune cells in neuroblastoma, *Francisca Bergsma (Princess Maxima Center for Pediatric Oncology, Utrecht).*
- 14.30 – 14.45** | Towards the establishment of Tumour Infiltrating Lymphocytes (TILs) programme for cancer in children and adolescents at the Hospital Infantil, Universitario del Niño Jesús, Madrid, *África González-Murillo (Hospital Infantil Universitario Niño Jesús, Madrid).*
- 14.45 – 15.00** | Early UK experience with GD2-targeted CAR T cells in H3 K27M Diffuse Midline Glioma, *Karin Straathof (UCL Great Ormond Street Institute of Child Health, London).*
- 15.00 – 15.30** | Break
- 15.30 – 16.00** | Strategies for effective CAR T cell therapy in solid tumours
Presenter: Dr Claudia Rösig (ITCC Solid Tumour Subcommittee).



DAY 1 THURSDAY 27TH MARCH

PRECISION MEDICINE AND AI

- 16.00 – 16.15** | Drug sensitivity profiling in the paediatric precision oncology program INFORM, *Ina Oehme (KITZ, DKFZ and DKTK, NCT, Heidelberg).*
- 16.15 – 16.30** | Defining the Transcriptional and Signalling Pathways that Drive Invasion in Diffuse Midline Gliomas, *David Castel (Gustave Roussy, Villejuif).*
- 16.30 – 16.45** | AI-based assessment of spatial patterns of tumour vasculature to inform rhabdomyosarcoma prognosis, *Anca Grapa (Institute of Cancer Research, London).*
- 16.45 – 17.00** | DNMT3B DNA methyltransferase acts as a major player and therapeutic target in rhabdoid tumours, *Celine Chauvin (Institut Curie, Paris).*
- 17.00 – 18.30** | Poster session with food and wine
- 19.00 – 00.00** | Networking Dinner Boiler Shop, 20 South Street, Newcastle upon Tyne, NE1 3PE



DAY 2 FRIDAY 28TH MARCH

07.00 – 08.00 | Optional sunrise 5K run along the Tyne River

PRECISION MEDICINE AND AI

09.00 – 09.45 | Zero Childhood Cancer: A national approach to improving outcomes of Australian children with cancer through precision medicine.

Keynote: Professor Michelle Haber (Children's Cancer Institute, Sydney).

09.45 – 10.00 | Developing a molecularly based stratification system for high risk ependymoma to inform early clinical trials: Insights from the E-HIT 2000 trial and subsequent registries, *David Ghasemi (Department of Pediatric Hematology and Oncology, University Medical Center Hamburg-Eppendorf).*

10.00 – 10.15 | Molecular and clinical heterogeneity within MYC-family amplified medulloblastoma is associated with survival outcomes: A multicenter cohort study, *Edward Schwalbe (Northumbria/Newcastle University).*

10.15 – 10.45 | Break

INNOVATIVE TARGETED THERAPIES

10.45 – 11.15 | Diagnosing MLL-r leukaemia and beyond: knowledge about the function(s) of MLL and its fusion proteins

Presenter: Professor Rolf Marschalek (ITCC Haematology Subcommittee).

11.15 – 11.30 | PD-L1 and TIGIT blockade enhances tumour control in Rhabdoid tumours, *presented by Franck Bourdeaut on behalf of Stéphanie Fitte-Duval (Institut Curie, Paris).*

11.30 – 11.45 | Development of a Novel Abemaciclib-based CDK4/6/9 PROTAC Degradator with Potent Anti-Proliferative Effect in Neuroblastoma, *Marlinde vd Boogaard (Princess Maxima Center for Pediatric Oncology, Utrecht).*

11.45 – 12.00 | Combinatorial drug sensitivity profiling to identify radiosensitizers in aggressive ependymoma, *Leonhard Bamberg (KITZ, DKFZ and DKTK, Heidelberg).*

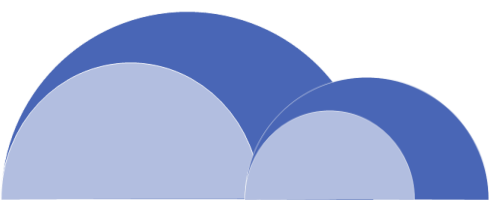
12.00 – 13.00 | Lunch

12.00 – 13.00 | MRT Working Group (closed meeting, Meeting Room)

13.00 – 13.30 | Next steps towards innovative therapies for rhabdoid tumors: report of the LifeArc-ITCC meetings.

Presenter: Franck Bourdeaut (ITCC Brain Tumour Subcommittee).

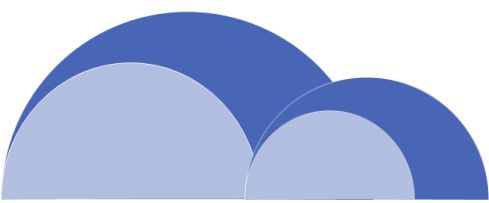
13.30 – 13.45 | A novel and potent strategy for blocking the Hedgehog pathway to treat rhabdomyosarcoma, *Josep Roma (Vall d'Hebron Research Institute, Barcelona).*



DAY 2 FRIDAY 28TH MARCH

INNOVATIVE TARGETED THERAPIES

- | | |
|----------------------|---|
| 13.45 – 14.00 | From alteration to malignancy: Decoding epigenetic dysregulation induced by BCOR/L1-alterations in paediatric brain tumours, <i>Katharina Bruckner (Comprehensive Center for Pediatrics and Comprehensive Cancer Center, Medical University of Vienna)</i> . |
| 14.00 – 14.15 | Pre-emptive Targeting of Preleukemic Cells in Down Syndrome with Pathway-Directed Therapies: A Novel Approach to Prevent Myeloid Leukaemia, <i>Anna-Lena Schmell (Department of Pediatrics, Goethe University Frankfurt)</i> |
| 14.15 – 14.45 | Break |
| 14.45 – 15.30 | Protein degraders: New insights and twists of molecular mechanism and drug design. <i>Keynote: Professor Alessio Ciulli (University of Dundee)</i> . |
| 15.30 – 15.45 | Small molecule drug screening, chemoinformatics and integrative transcriptomics identify targetable MYC-dependent therapeutic vulnerabilities in high-risk medulloblastoma, <i>Louisa Taylor (Wolfson Childhood Cancer Research Centre, Newcastle University)</i> . |
| 15.45 – 16.00 | Data-driven optimisation of drug combinations in relapsed/refractory paediatric T-ALL, <i>Alistair Poll (Wolfson Childhood Cancer Research Centre, Newcastle University)</i> . |
| 16.00 – 16.30 | Closing remarks and prize giving
<i>Dr Quentin Campbell-Hewson & Prof Pam Kearns (Organising Committee)</i> . |
| 17.30 – 19.30 | Networking drink The Central Bar, Half Moon Lane, Gateshead, NE8 2AN |



SPONSORS



BRONZE SPONSORS



SILVER SPONSORS



GOLD SPONSORS

